

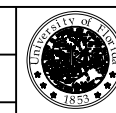
GROUND FLOOR



**PHHP, Nursing, Pharmacy
Ground Floor
Building # 0212**

Rev. Date	Project #	Rev. By

GRID AREA:
3C3
SCALE
1"=40'

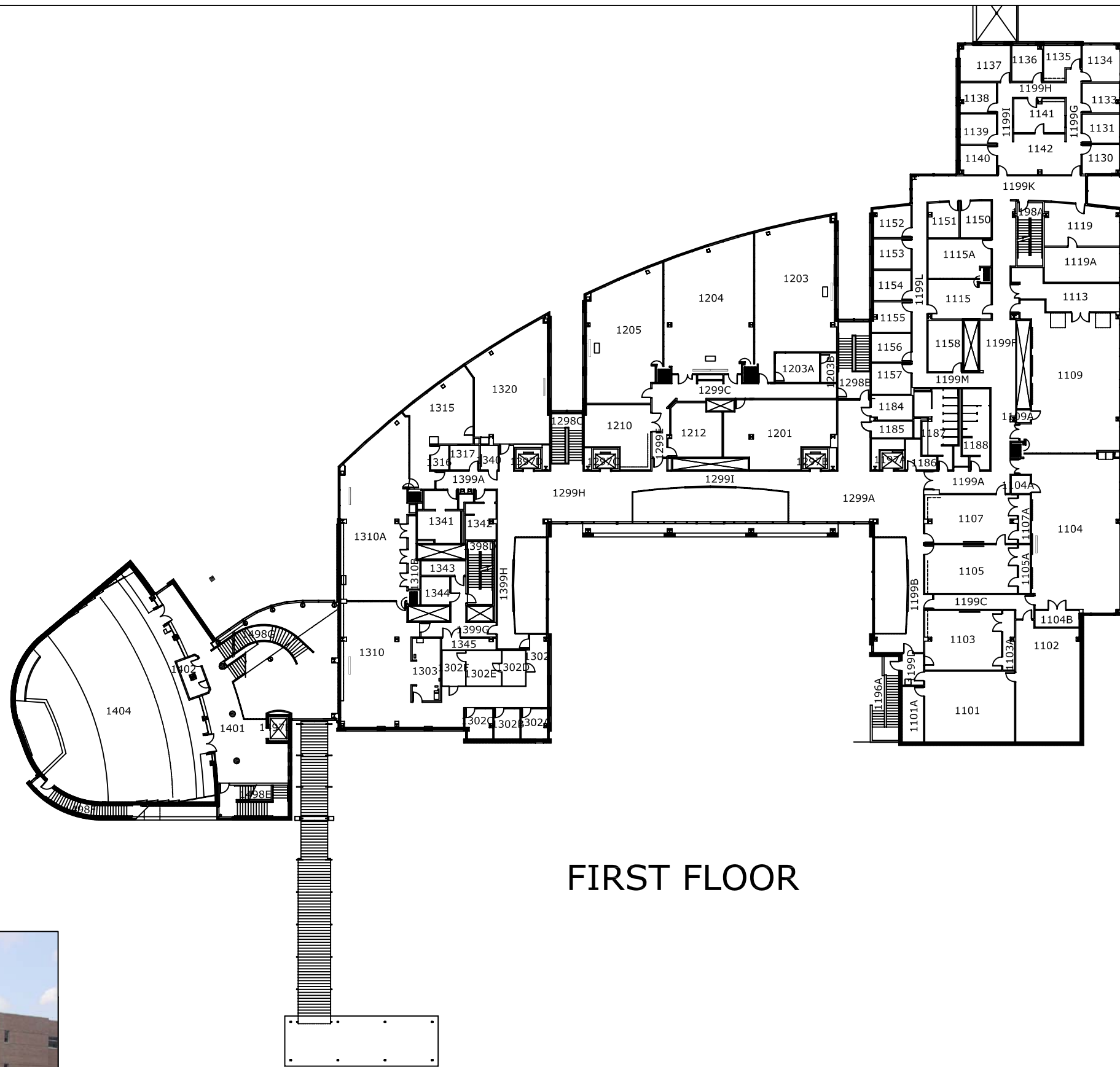


**UNIVERSITY OF
FLORIDA**

University of Florida
Finance and Administration
UF Facilities Planning and Construction
www.facilities.ufl.edu

232 Stadium
PO Box 115050
Gainesville, FL 32611-5050
Telephone: (352) 392-1256
Fax: (352) 392-6378

Room DG-23
PO Box 100003
Gainesville, FL 32610-0003
Telephone: (352) 392-2683
Fax: (352) 392-5247



FIRST FLOOR



**PHHP, Nursing, Pharmacy
First Floor
Building # 0212**

Rev. Date	Project #	Rev. By

GRID AREA:
3C3
SCALE
1" = 40'

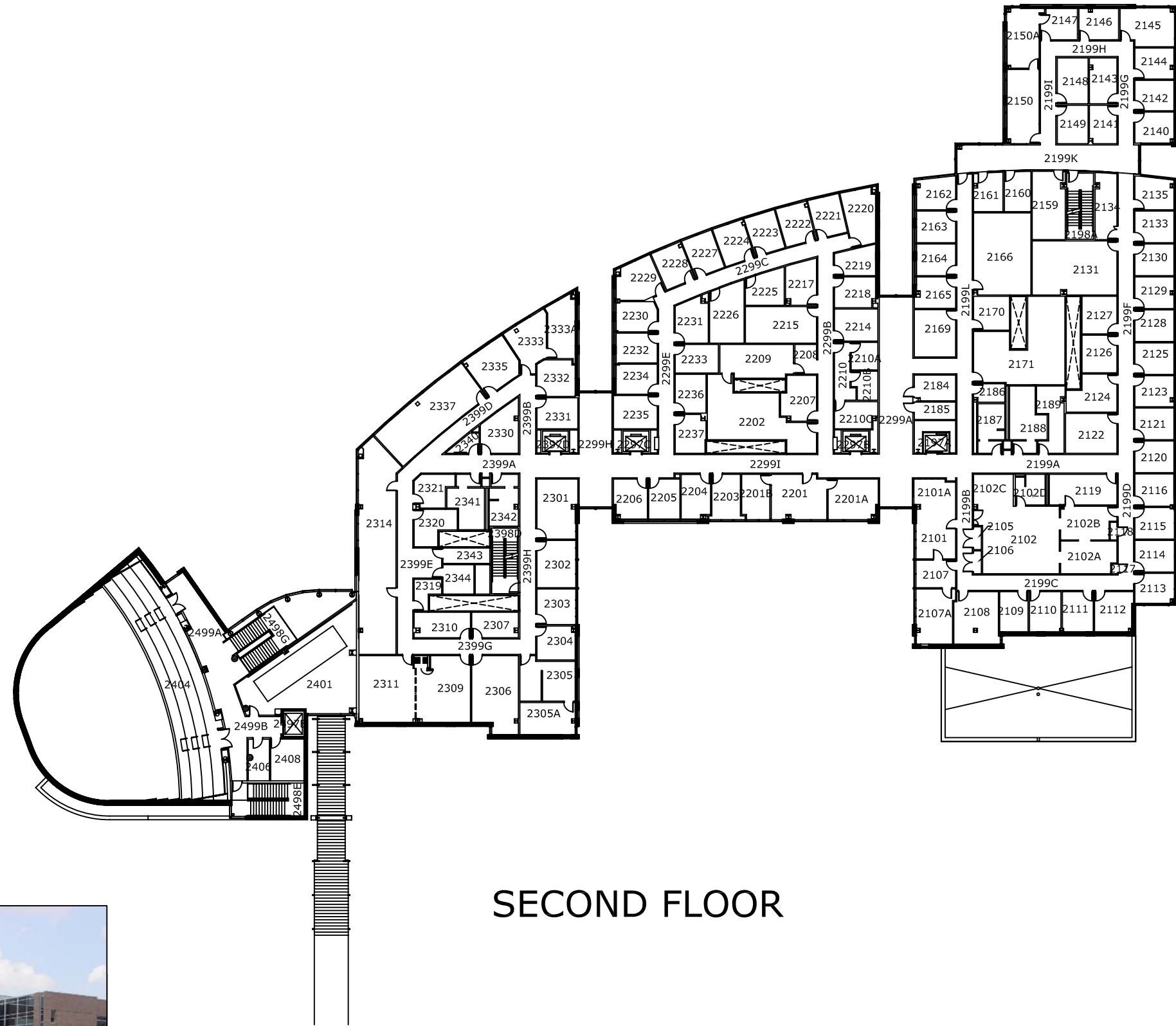


**UNIVERSITY OF
FLORIDA**

University of Florida
Finance and Administration
UF Facilities Planning and Construction
www.facilities.ufl.edu

232 Stadium
PO Box 115050
Gainesville, FL 32611-5050
Telephone: (352) 392-1256
Fax: (352) 392-6378

Room DG-23
PO Box 100003
Gainesville, FL 32610-0003
Telephone: (352) 392-2683
Fax: (352) 392-5247



SECOND FLOOR



**PHHP, Nursing, Pharmacy
Second Floor
Building # 0212**

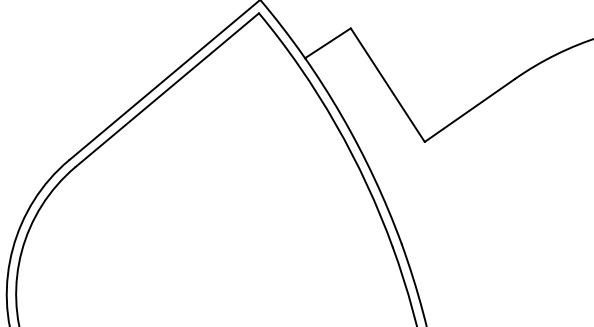
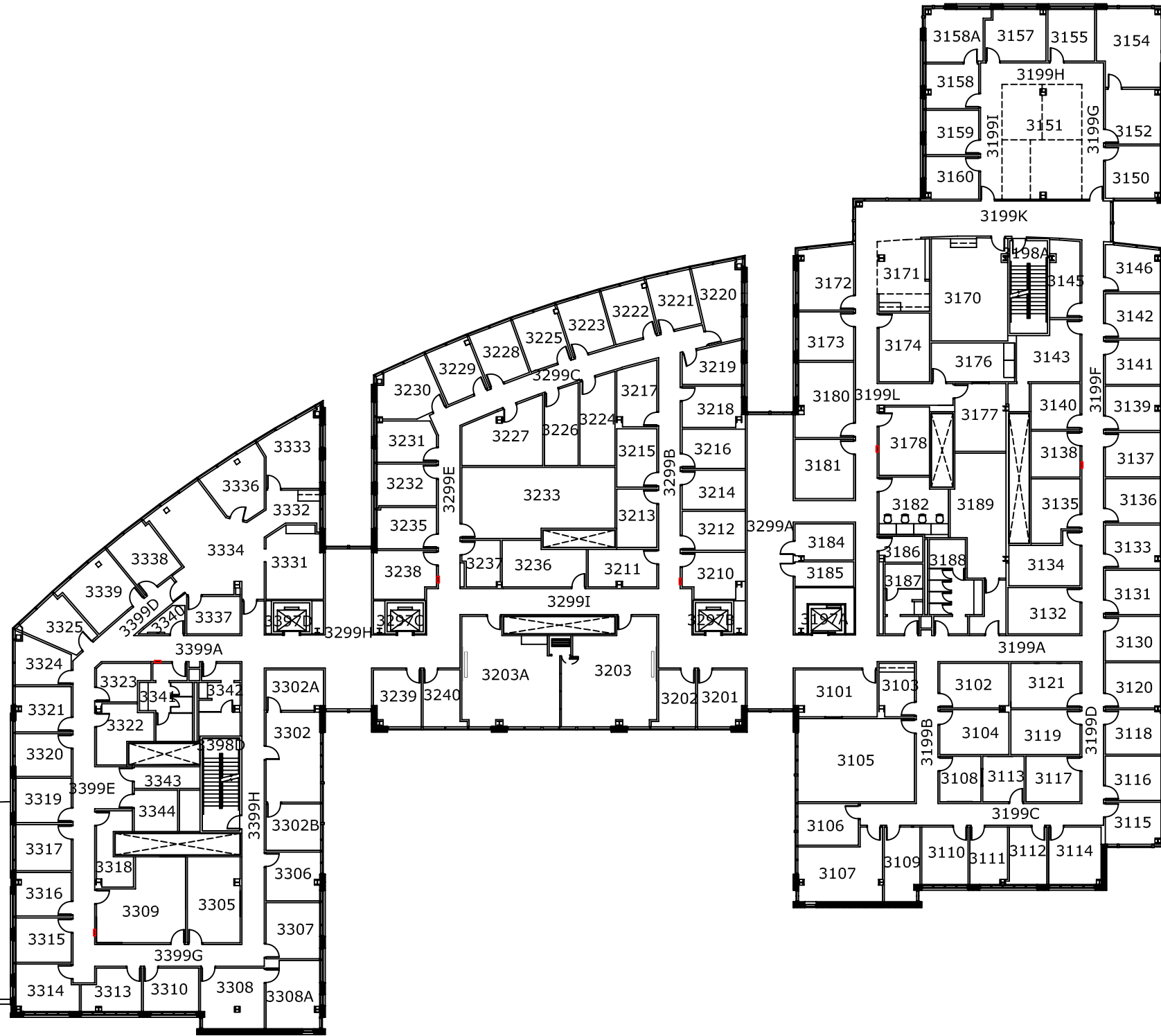
Rev. Date	Project #	Rev. By

GRID AREA:
3C3
SCALE
1"=40'

UNIVERSITY OF FLORIDA
University of Florida
Finance and Administration
UF Facilities Planning and Construction
www.facilities.ufl.edu

232 Stadium
PO Box 115050
Gainesville, FL 32611-5050
Telephone: (352) 392-1256
Fax: (352) 392-6378

Room DG-23
PO Box 100003
Gainesville, FL 32610-0003
Telephone: (352) 392-2683
Fax: (352) 392-5247



PHHP, Nursing, Pharmacy Third Floor Building # 0212

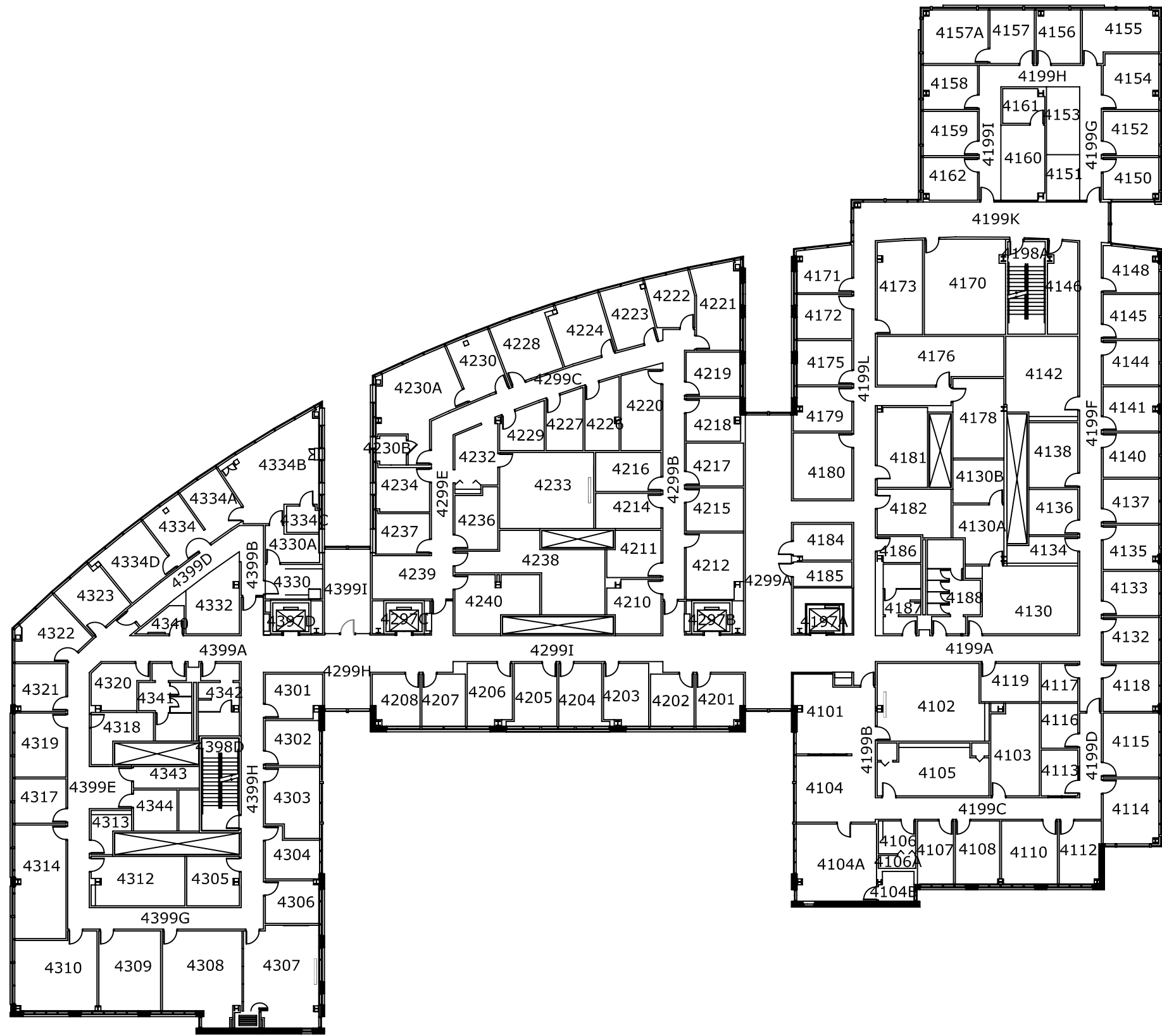
Rev. Date	Project #	Rev. By

GRID AREA:
3C3
SCALE
1"=40'

UNIVERSITY OF FLORIDA
University of Florida
Finance and Administration
UF Facilities Planning and Construction
www.facilities.ufl.edu

232 Stadium
PO Box 115050
Gainesville, FL 32611-5050
Telephone: (352) 392-1256
Fax: (352) 392-6378

Room DG-23
PO Box 100003
Gainesville, FL 32610-0003
Telephone: (352) 392-2683
Fax: (352) 392-5247



FOURTH FLOOR

PHHP, Nursing, Pharmacy Fourth Floor Building # 0212

Rev. Date	Project #	Rev. By

GRID AREA:
3C3
SCALE
1"=40'

UNIVERSITY OF FLORIDA

University of Florida
Finance and Administration
UF Facilities Planning and Construction
www.facilities.ufl.edu

232 Stadium
PO Box 115050
Gainesville, FL 32611-5050
Telephone: (352) 392-1256
Fax: (352) 392-6378

Room DG-23
PO Box 100003
Gainesville, FL 32610-0003
Telephone: (352) 392-2683
Fax: (352) 392-5247

